

Adobe® Photoshop® CS2

What's New in Adobe Photoshop CS2

The professional standard in desktop digital imaging

About Photoshop CS2

Photoshop CS2 software leads the family of Adobe digital imaging products, including Adobe Photoshop Elements 3.0 and Adobe Photoshop Album 2.0 software.

Photoshop CS2 is also part of the Adobe Creative Suite, a complete design solution that combines Adobe Illustrator® CS2, Adobe InDesign® CS2 and Version Cue® CS2 software, as well as Adobe GoLive® CS2 and Adobe Acrobat® 7.0 Professional software in the Premium Edition.



When viewed with Adobe Reader® software, you can click on any feature title on this page to navigate directly to details for that feature.

Welcome to Adobe® Photoshop® CS2, breaking new ground as the benchmark of digital imaging excellence. This latest version of the digital imaging standard introduces new levels of power, precision and control, with an exciting combination of revolutionary new features and next-generation enhancements. Photoshop CS2 software pushes the boundaries of digital photography, helps you turn your dreams into designs faster and more easily than ever before, and helps you organize and process images in a fraction of the time.

Adobe Photoshop CS2 includes:

The Power to Create the Extraordinary

Adobe Bridge—The next-generation File Browser for Photoshop CS2.

Vanishing Point—Groundbreaking ability to clone, paint and transform in the perspective of your images.

Image Warp—Warp any object, with customizable presets and adjustable control points.

Noise Reduction—Advanced correction of noise created in high-ISO shooting, plus JPEG artifact reduction.

32-bit HDR—Create and edit 32-bit, High Dynamic Range images, for the widest range and richest detail.

Spot Healing Brush—Fast, efficient one-click retouching of dust, scratches and other image flaws.

One-Click Red Eye Correction—Instantly eradicate this common photo flaw.

Optical Lens Correction—Correct common lens issues like barrel and pincushion distortion.

Animation—Easily create animated Web graphics directly in Photoshop CS2.

Smart Sharpen—Intelligently counteract common photo blurring with advanced control.

Shadow/Highlight—Simple discrete adjustment of shadows and highlights, now also for CMYK images.

Enhanced 16-bit Editing—Additional filters, such as Liquify, are now available for use in 16-bit images.

Creation Acceleration

Smart Objects—Non-destructive editing and transformations, including Illustrator CS2 integration.

Multiple Layer Control with Smart Guides—Faster, more intuitive editing without using the Layers palette.

Multi-Image Camera Raw—Process multiple raw images while you continue to work in Photoshop CS2.

Video Preview—Send an instant preview of video-destined images to an external monitor.

WYSIWYG Font menus—Preview typefaces visually, right in the Font menu.

Printing Enhancements—New options enable more efficient, consistent print output.

All-New PDF Engine—Comprehensive, customizable presets and PDF 1.6/Acrobat 7.0 compatibility.

Enhanced Memory Use—Devote more than 2 GB of RAM to Photoshop CS2 for optimum performance.

Powerful Design Process Management—Easier versioning & collaboration with the new Adobe Version Cue®.

Integrated Adobe Online Services—Access and download professional Adobe Stock Photos and share and print online with Adobe Photoshop Services.

Adaptability—Making Photoshop CS2 Your Own

Menu Customization—Workflow-based presets and custom-defined menu sets, with color-keyed commands.

Enhanced Automation—New actions and scripts facilitating batch image processing and film & video production.

Variables—Streamline creation of repetitive graphics using imported spreadsheet data.

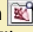
Event-Based Scripting—Expand your efficiency with commands triggered at specific points in your workflow.

Adobe Help Center—New task-based help topics and search features in a separate floating window.

The Power to Create the Extraordinary

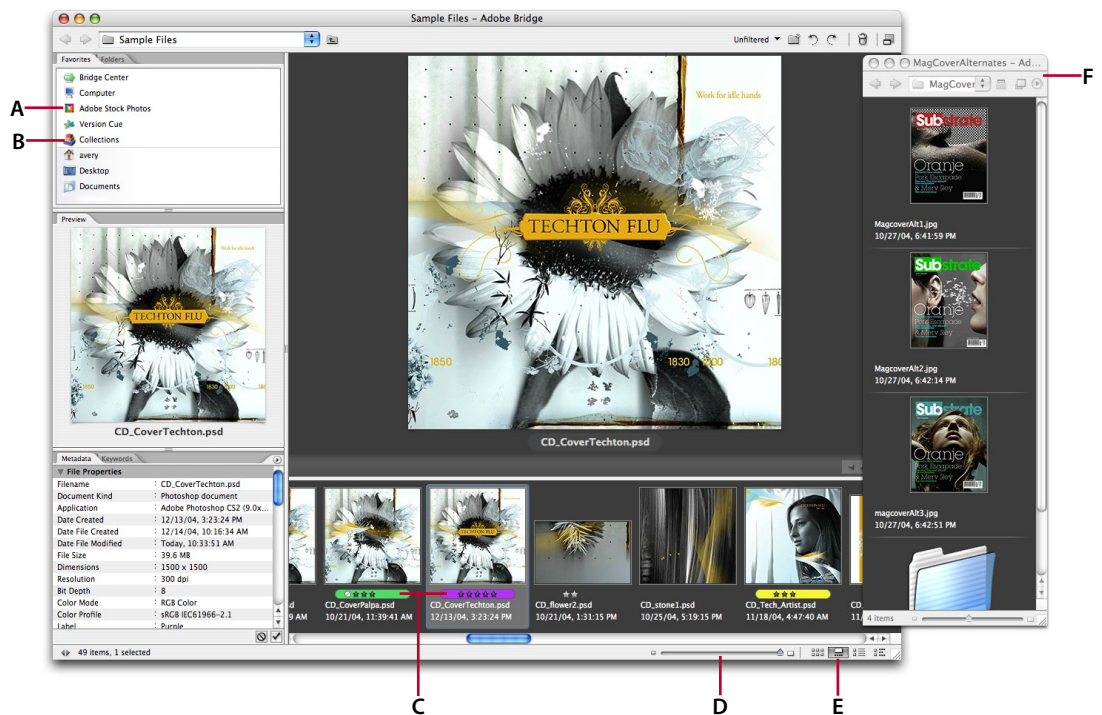
Photoshop CS2 software introduces revolutionary new features like Vanishing Point, and refines favorites, to help you make the most of every creative impulse. Providing technology that anticipates emerging technologies, along with intelligent, non-destructive image editing and tighter integration with other Adobe Creative Suite applications, Photoshop CS2 once again exceeds all expectations, with the ultimate in precise control and quality.



Access Adobe Bridge from within Photoshop CS2 with its options bar button  or by choosing File > Browse.

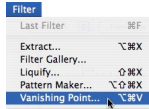
Adobe Bridge

In Adobe Photoshop CS2, the acclaimed File Browser evolves into its own application: Adobe Bridge. Integrated through the same familiar commands as the File Browser, Adobe Bridge lets the applications work efficiently in parallel — Bridge building thumbnails while you edit in Photoshop CS2, or Photoshop CS2 batch processing images while you continue to work in Adobe Bridge. Adding essential new features for photographers such as multiple-file Camera Raw processing, enhanced flagging and a slideshow mode, Adobe Bridge also integrates with Illustrator CS2, InDesign CS2 and GoLive CS2, bridging the workflow across the new Creative Suite applications.



Adobe Bridge includes:

	Multi-image Camera Raw (see page 5)	Adjust, crop & process multiple raw images simultaneously
	Multiple windows	Easily compare multiple images and work across multiple monitors
C	Enhanced Ratings and Labels	Quickly flag files with sharable ratings and labels
	Built-in Slideshow	Review, rate and label images fast with the integrated Slideshow mode
D	Scalable thumbnail previews	Adjust your thumbnails from tiny to extra-large with a click of the mouse
F	Compact, floating window mode	Toggle Adobe Bridge into a small floating mode with one keystroke, enabling drag-and-drop to applications like Illustrator CS2 and InDesign CS2
B	Sophisticated search & Collections	Search file names and metadata in a variety of formats and save your searches as reusable Collections
	More powerful automation	Batch process multiple images in Photoshop CS2 more easily, and unlock the power of Adobe Creative Suite 2 with cross-application processing
	Customizable saved workspaces	Reconfigure Adobe Bridge windows on the fly
E	Filmstrip view	Review images more quickly and efficiently with the new Filmstrip mode
	Multiple file format support	Leaf through multi-page PDFs, preview Illustrator CS2 files and InDesign CS2 templates, view color and font usage in InDesign CS2 files, and more
A	Built-in Adobe Stock Photos (see page 6)	Easily find, purchase & download the stock images you need, inside Adobe Bridge
	Creative Suite-wide color management	Synchronize color management settings of all Adobe Creative Suite 2 applications in one click (available with installation of the complete Adobe Creative Suite 2 product)



Vanishing Point

Effortlessly edit and transform with tools that automatically adjust to the visual perspective of your images with the revolutionary, plane-based Vanishing Point. Define your perspective planes visually with the perspective grid tool, then paint, clone and drag objects around corners and into the distance. Cutting literally hours off precision design and photo retouching tasks, one use and you'll wonder how you ever lived without it.



Before & After: A simple selection cloned to turn office tower into skyscraper. Painting, healing, and transformations, all with automatic perspective adjustment, are equally easy with the revolutionary Vanishing Point.

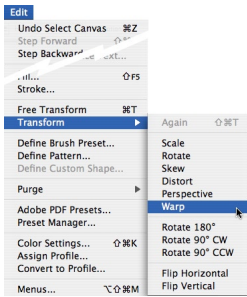
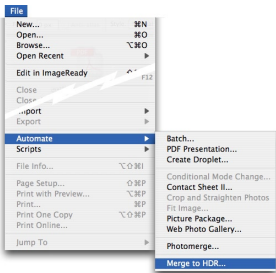


Image Warp shrinks the time it takes to create product art mockups, by letting you quickly and easily warp and twist your graphics directly on the canvas.

Image Warp

Expand your creative options with live image warping directly on the canvas. Start with one of the comprehensive set of included presets, or customize your warp by simply dragging control points on the warp grid. Image Warp makes short work of wrapping graphics around objects, and when coupled with the new Smart Objects features, warps stay fully re-editable.

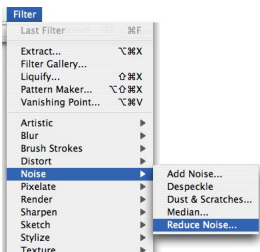


32-bit HDR

With 32-bit, floating point, high dynamic range (HDR) editing, you can now take control of the full detail from the deepest shadows to the brightest highlights, and everywhere in between. Create images with the widest possible dynamic range, without having to sacrifice detail in one part of your image in order to maintain it in another. Use Merge to HDR to even create 32-bit HDR images from your current digital camera, by automatically combining a series of regular exposures.

Reduce Noise

Expand the usable ISO range of your digital camera and maximize image quality by reducing the noise from camera sensors as well as film grain. The advanced controls of Reduce Noise can discretely address the noise in individual color channels while preserving edge detail, as well as correcting JPEG compression artifacts.



The Reduce Noise filter quickly corrects color noise in digital camera images, on a global or per-channel basis, with optional one-click JPEG artifact correction. Compare the pre-filter image at the top right of the magnified inset with the filtered results at lower left.

Spot Healing Brush

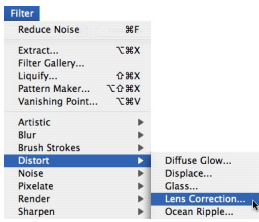
Effortless, one-click retouching is yours with the advanced power of the new, Photoshop CS2 Spot Healing Brush. Click or paint flaws away, remove entire objects, and heal across all layers with your choice of blending and sample modes—even in 16-bit and CMYK images. The advanced Spot Healing Brush analyzes the area around the tool as you use it, and automatically samples the best pixels to use for healing the clicked or painted area.



With the Spot Healing Brush, one click is all it takes to replace even entire objects in an image.

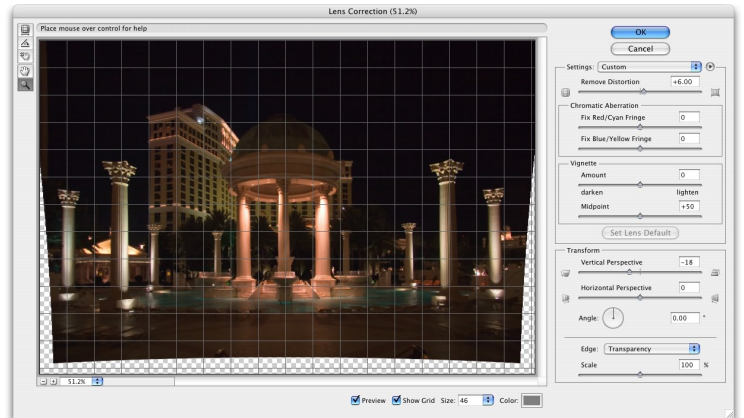
One-Click Red Eye Tool

Enjoy simple, accurate correction of the 'red eye' caused by retinal flash reflection, with advanced control for pupil size and darkening effect when you want it.



Optical Lens Correction

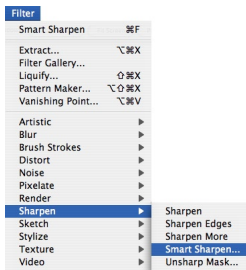
Quickly and efficiently correct a wide range of common camera lens distortion flaws from a single easy-to-use interface. Eliminate barrel or pincushion distortion, chromatic aberration, vignetting, and perspective flaws in all three dimensions, and do it in one pass with simple, intuitive controls, a live preview and an alignment grid.



After applying Optical Lens Correction, the surface-curving distortion caused by the wide angle lens and low shooting angle are eliminated. The adjustable grid provides constant visual feedback, so you can easily tell when the horizontal and vertical surfaces in your shot are lined up properly.

Animation

Quickly create dynamic GIF animations directly in Photoshop CS2 software with the new Animation palette and Layer palette animation options.



Smart Sharpen



Easily counteract common image blurring with fine correction control based on the specific blur types—motion, lens and Gaussian. Smart Sharpen is a cut above the familiar Unsharp Mask, with effective preservation of edge details and discrete advanced sharpening of shadows and highlights.

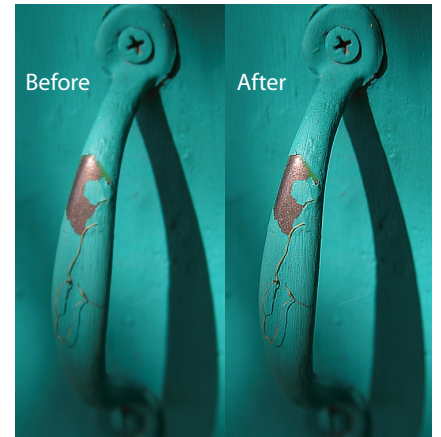
Shadow/Highlight

Quickly enhancing the detail in shadows and reducing overexposed highlights, with discrete control of midtones contrast, the popular Shadow/Highlight adjustment is now available for CMYK images.

Enhanced 16-bit Filter Support

In Photoshop CS2, even more filters have been upgraded to 16-bit compatibility, including Liquify and Lens Blur.

 The  symbol denotes a feature significantly enhanced from Adobe Photoshop CS. All other features in this document are new in Photoshop CS2.



Smart Sharpen intelligently enhances the detail in your image, with discrete adjustments for shadows and highlights in its Advanced options.

Creation Acceleration

Speed your way from first concept to final creation, with efficiency enhancements that bring momentum to your workflow and a smile to your face. Enjoy non-destructive editing, find the fonts you want visually, and precisely process your digital photography projects in a fraction of the time.

Smart Objects

Experience new levels of flexibility and maintain optimum image quality from start to finish. Smart Objects allow non-destructive scaling, rotation and warping of layers within Photoshop CS2. Rich vector data pasted or placed from Adobe Illustrator CS2 graphics remain live and scalable, and edits applied in Illustrator CS2 are automatically reflected in Photoshop CS2. Smart Objects can also work much like symbols in Illustrator CS2 — editing one linked copy will update all other linked copies automatically.



After resampling up, the full quality of the embedded vector Smart Object (right) is preserved, and can be edited at any time with Adobe Illustrator CS2.

Multiple Layer Control with Smart Guides

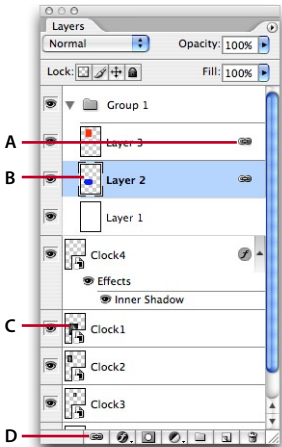
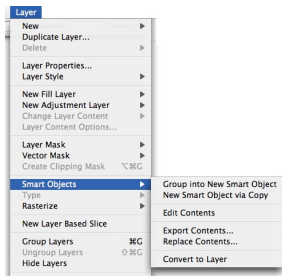
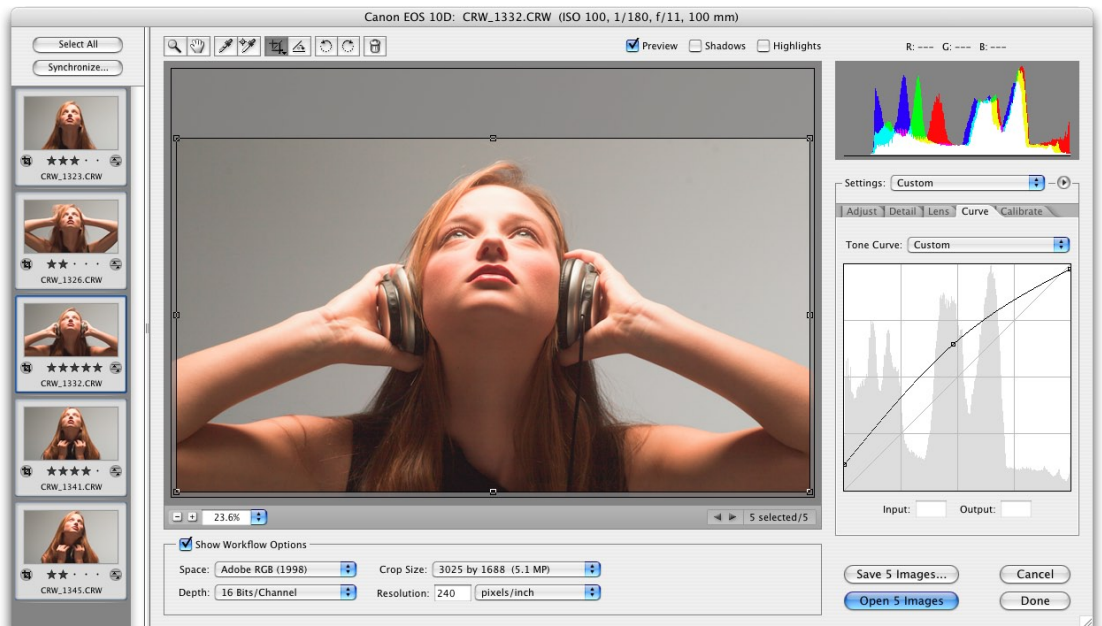
Intuitively select, align, group and simultaneously move multiple layers on the document canvas. Drag a marquee around objects on multiple layers to create a multiple selection; Shift-click to add new objects to the selection. Enable automatically-appearing Smart Guides to help line up your objects and snap them to borders and centers. Multiple Layer Control means enhanced efficiency.

E Multi-Image Camera Raw

Accelerate your Camera Raw workflow with simultaneous processing of multiple images while you continue working. Process photo shoots in a fraction of the time it used to take, enjoy support for the most comprehensive set of digital camera models, and quickly export your images into your choice of popular formats, including the new Digital Negative specification (DNG).

Camera Raw now includes:

- **Multithreaded Performance**—Process multiple Camera Raw images directly into PSD, TIFF, JPEG or DNG, while simultaneously editing the settings in additional images or editing in Photoshop CS2 software.
- **Automatic Image Analysis**—Advanced automatic adjustment of exposure, shadows, brightness and contrast.
- **Clipping Previews**—Discrete display of shadow and highlight clipping while adjusting settings.
- **Curves**—Precision tone curve adjustment with available included contrast presets.
- **Crop and Straighten Tools**—Custom or preset ratio cropping and image straightening for more efficient image processing (original Camera Raw data is always preserved—only the processed image is affected).
- **Color Samplers**—Set up to four color samplers in each image.
- **Export Settings**—Save custom image settings to an external file for more efficient collaboration.



Layers Palette Enhancements

- A Linked layers indicator
- B Normal layer thumbnail
- C Smart Object thumbnail
- D Link layers button

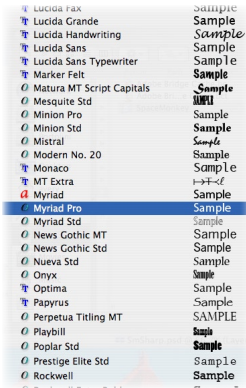
Camera Manufacturer Raw Support

Adobe Camera Raw is compatible with most raw-capable digital cameras, including models from:

Canon
Contax
Fujifilm
Kodak
Konica Minolta
Leaf
Leica
Nikon
Olympus
Panasonic
Pentax
Sigma
Sony

For an up-to-date list of supported camera models, please visit:

<http://www.adobe.com/products/photoshop/cameraraw.html>



WYSIWYG Font Menu

“What You See Is What You Get” — WYSIWYG. In Photoshop CS2, that means typeface samples right in the Font menu, so you can choose your typeface visually instead of having to remember them by name.

Video Preview

See your broadcast graphics as they’ll appear to the audience, while you’re still building them. With one click, you can preview your work on a television monitor connected to your computer by FireWire (IEEE 1394/i.LINK).

E Better Printing

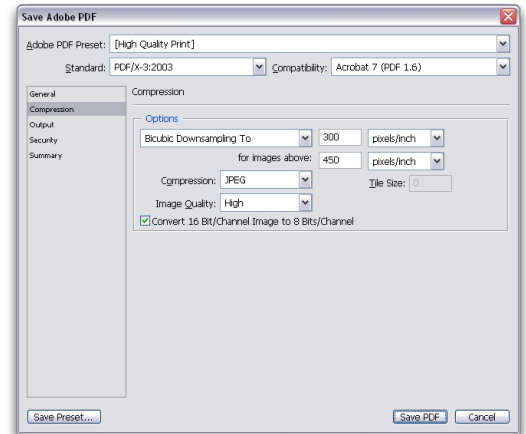
Photoshop CS2 reduces the trial-and-error printing process, even on desktop inkjets. New options in the print dialog make it even easier to get great results and consistent color on all your printing jobs.

E All-New PDF Engine

Comprehensive, customizable PDF presets let you take advantage of the new Photoshop CS2 PDF engine, including PDF 1.6/Acrobat 7.0 compatibility.

E High Capacity RAM Compatibility

To make the most of systems running 64-bit processors, Photoshop CS2 can now address more than 2 GB of RAM. Photoshop CS2 can address approximately 3.5 GB of RAM on a Power Macintosh G5 running Mac OS X, or on a Windows XP 64-bit Edition system running an Intel® Xeon™ processor with EM64T, or an AMD Athlon™ 64 or Opteron™ processor.



E Design Process Management

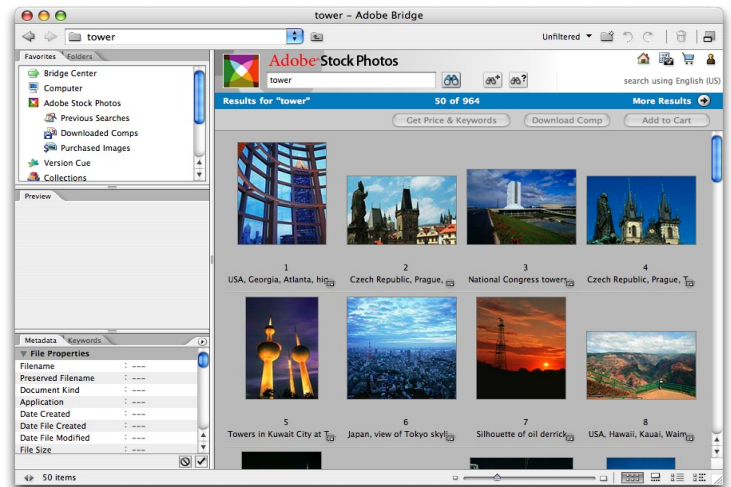
Photoshop CS2 and Adobe Bridge support the new Adobe Version Cue CS2 (available exclusively as part of the Adobe Creative Suite 2), for easy versioning and collaboration in all your design projects.

Adobe Photoshop Services & Adobe Stock Photos

Access the new Adobe Photoshop Services through Adobe Bridge, with online collaboration options and printing, including large format images.

With the new Adobe Stock Photos service, in just a few clicks you can search, purchase and download from a collection of tens of thousands of professional quality images.

Availability restrictions may apply—please see Adobe.com for details.



Work with professional third-party images across the country as easily as the ones on your hard drive. With Adobe Stock Photos, you can easily access, purchase and download any of the tens of thousands of images available, without leaving Adobe Bridge.

Adaptability — Making Photoshop CS2 Your Own

Photoshop CS2 software takes adaptability to another level, with new customization and assistance options to let you modify the environment to suit both your personal preferences and the requirements of specific projects.

Menu Customization

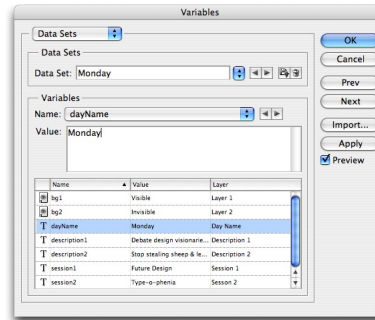
Make it your Photoshop with customizable application menus. Photoshop CS2 comes equipped with many preset workspaces already optimized for specific task-based workflows, and you can quickly and easily create and save your own in the new Menu Customization window. Enable, disable and color-key menu commands with your custom assigned keyboard shortcuts, then save your custom layout as a workspace for one-click access.

E Enhanced Automation

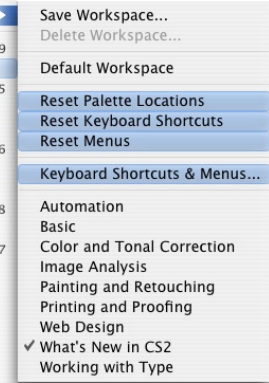
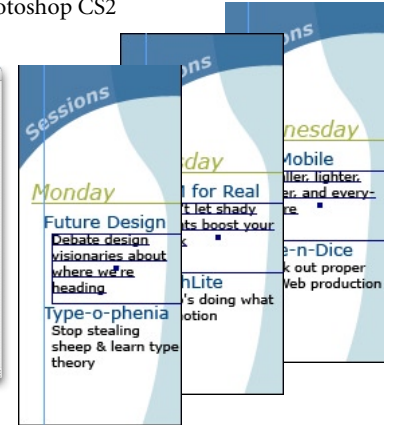
Photoshop CS2 makes the processing of multiple images easier than ever. Use the new Image Processor command to process Camera Raw and other images. Use new built-in actions to prepare images for film and video. And use Adobe Bridge to hand off images for processing in Photoshop CS2 while you continue working in Adobe Bridge.

E Variables

Quickly build series of repetitive graphics, by automatically populating your designs with data imported from spreadsheets and databases, or defined directly in Photoshop CS2, with no programming knowledge required. Variables enables fast, efficient creation of repeating graphics, such as Web banners or titles for school portraits.



Variables speed the creation of a series of repetitive graphics.



Choose Window > Workspace to reveal the new task-based workspace presets included in Photoshop CS2, including "What's New in CS2," a preset which displays new and enhanced Photoshop feature commands color-keyed in blue for easy browsing.

System Requirements

Macintosh

- PowerPC® processor (G3, G4 or G5)
- Mac OS® X version 10.2.8 through 10.3.8 (10.3.4 through 10.3.8 recommended)
- 320 MB of RAM (384 MB recommended)
- 750 MB of available hard disk space
- 1024x768 monitor resolution with 16-bit video card
- CD-ROM drive
- Internet or phone connection required for product activation

Windows®

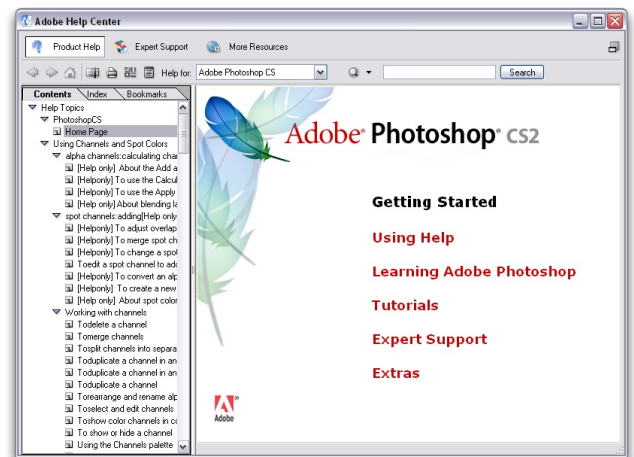
- Intel® Xeon, Xeon Dual, Centrino, Pentium® class III or 4 processor
- Microsoft® Windows® 2000 with Service Pack 4 or Windows XP with Service Pack 1 or 2
- 320 MB of RAM (384 MB recommended)
- 650 MB of available hard disk space
- 1024x768 monitor resolution with 16-bit video card
- CD-ROM drive
- Internet or phone connection required for product activation

Event-Based Scripting

Expand your automated control. Set Photoshop CS2 to run the actions and scripts you want at the workflow points you specify, all in a single interface. Use standard Photoshop CS2 events to trigger any scripts, for a faster custom workflow, with quick setup in the new Script Events Manager window.

Adobe Help Center

The new Adobe Help Center floats above Photoshop CS2 in its own window, making it easier to use its improved search features and task-based help topics. The new floating Adobe Help viewer provides ready access to full assistance for Photoshop CS2 and all of the Adobe Creative Suite applications, including task-based assistance and faster searches.



About Adobe Systems Incorporated

Adobe helps people and businesses communicate better through its world-leading digital imaging, design and document technology platforms for consumers, creative professionals and enterprises. Adobe's revenue in its last fiscal year exceeded \$1.2 billion. For more information about Adobe, visit www.adobe.com.